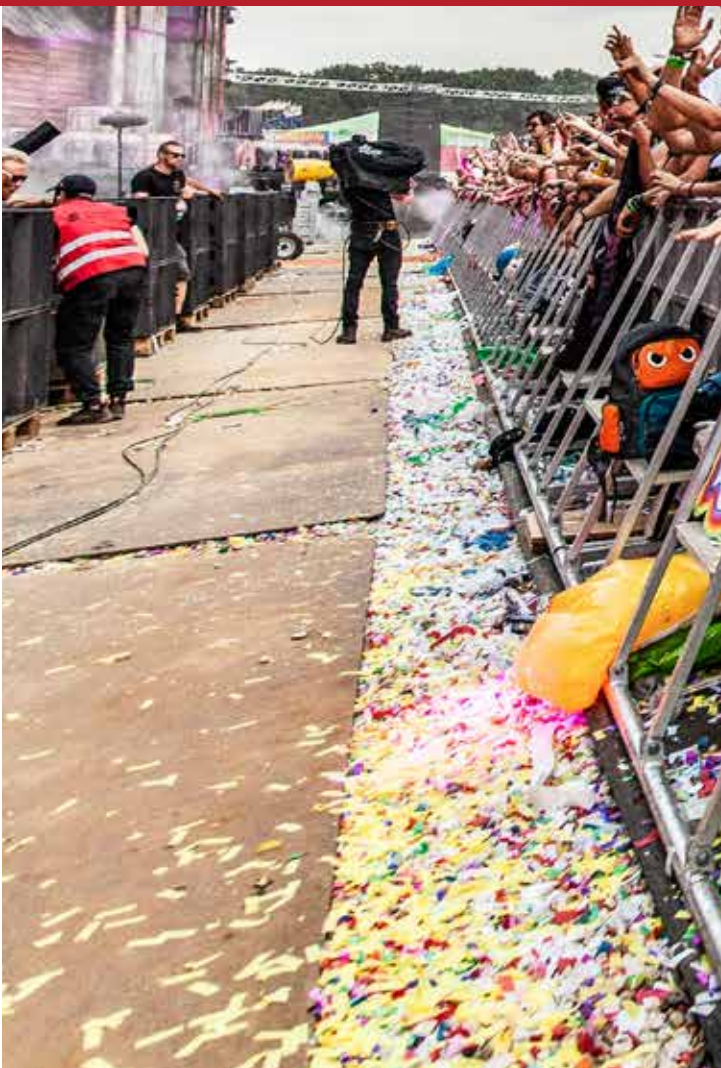


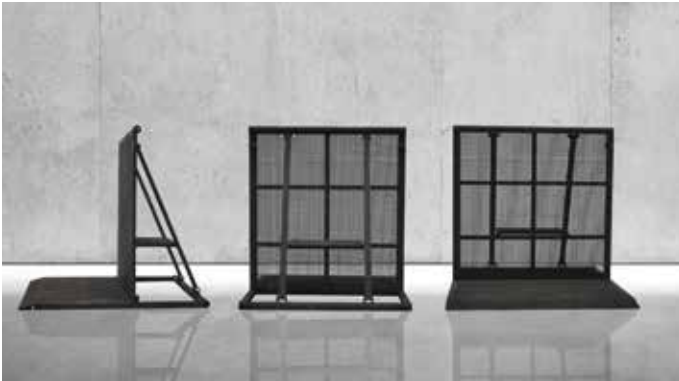


GIGS SPECIAL ELEMENTS



GIGS Special Elements

GIGS Straight



| | |
|--------------------------------|---|
| Material: | aluminum |
| Dimensions (l x w x h): | 1.09 x 1.25 x 1.18 m (43 x 49 x 46 in) |
| Weight: | approx. 41.00 kg |
| Color: | silver or black |
| Transport: | 10 standard units per transport rack; approx. 36 transport racks per standard trailer (approx. 390 m / 1,280 ft overall length) |

GIGS Half Standard



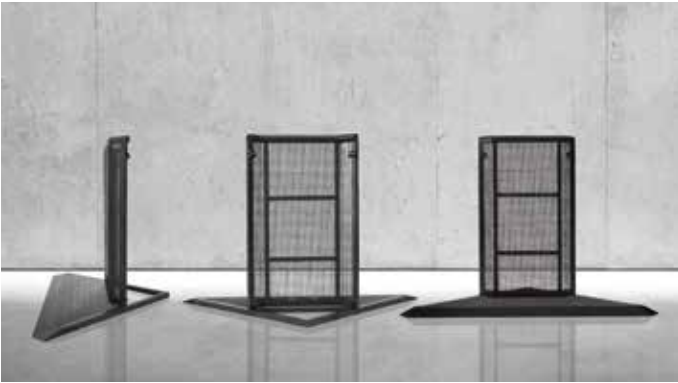
| | |
|--------------------------------|---|
| Material: | aluminum |
| Dimensions (l x w x h): | 0.54 x 1.25 x 1.18 m (21 x 49 x 46 in) |
| Weight: | approx. 21.00 kg |
| Color: | silver or black |
| Transport: | 20 standard units per transport rack; approx. 36 transport racks per standard trailer (approx. 390 m / 1,280 ft overall length) |

GIGS Vario



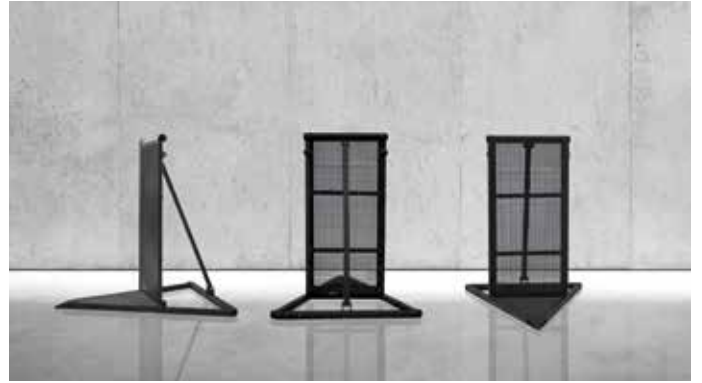
| | |
|--------------------------------|---|
| Material: | aluminum |
| Dimensions (l x w x h): | 1.09 x 1.25 x 1.18 m (43 x 49 x 46 in) |
| Weight: | approx. 44.00 kg |
| Color: | silver or black |
| Angle: | from -60° to +60° |
| Transport: | 10 per dolly |

GIGS Corner 90°



| | |
|--------------------------------|---|
| Material: | aluminum |
| Dimensions (l x w x h): | 0.88 x 1.25 x 1.18 m (36 x 49 x 46 in) |
| Weight: | approx. 26.9 kg (59.3 lbs) / 32.00 kg (70.5 lbs) |
| Color: | silver or black |
| Angle: | 90° |
| Transport: | 10 per dolly |

GIGS Corner 45°



| | |
|--------------------------------|---|
| Material: | aluminum |
| Dimensions (l x w x h): | inside: 0.96 x 1.25 x 1.18 m (38 in x 49 x 46 in) outside: 1.10 x 1.25 x 1.18 m (43 in x 49 x 46 in) |
| Weight: | approx. 16.80 kg (37 lbs) / 23.5 kg (51.8 lbs) |
| Color: | silver or black |
| Angle: | 45° |
| Transport: | 10 per dolly |

GIGS Corner 22.5°



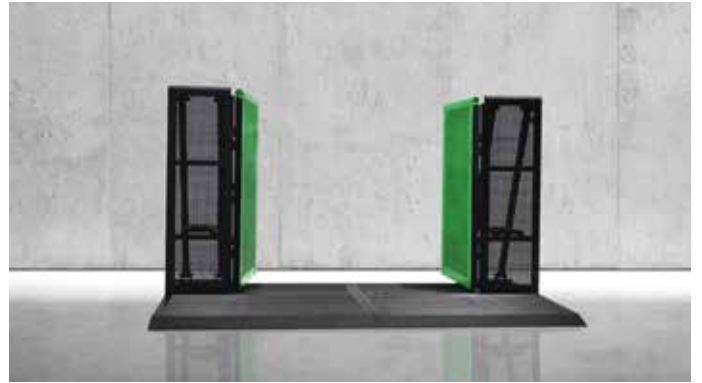
| | |
|--------------------------------|--|
| Material: | aluminum |
| Dimensions (l x w x h): | inside: 0.512 x 1.25 x 1.18 m (20 in x 49 x 46 in) outside: 0.65 x 1.25 x 1.18 m (26 in x 49 x 46 in) |
| Weight: | approx. 12.00 kg (26.5 lbs) |
| Color: | silver or black |
| Angle: | 22.5° |
| Transport: | 10 per dolly |

GIGS Truck Gate



Material: aluminum
Dimensions (l x w x h): 4.25 x 1.25 x 1.18 m (166 x 49 x 46 in)
transfer: 3.24 m (127 in)
Weight: approx. 219.00 kg (483 lbs)
Color: silver or black
Transport: 2 per dolly

GIGS Emergency Gate



Material: aluminum
Dimensions (l x w x h): 2.135 x 1.25 x 1.18 m (84 x 49 x 46 in)
transfer: 1.20 m (47 in)
Weight: approx. 102.00 kg (225 lbs)
Color: silver or black/green
Transport: 5 per dolly

GIGS Flex



Material: aluminum
Dimensions (l x w x h): 1.09 x 0.10 x 1.18 m (43 x 4 x 46 in)
Weight: approx. 20.00 kg (44 lbs)
Color: silver or black
Transport: 12 per dolly

GIGS T-Barricade



Material: aluminum
Dimensions (l x w x h): 0.78 x 0.05 x 1.18 m (31 x 2 x 46 in)
Weight: approx. 17.30 kg (38 lbs)
Color: silver or black
Transport: 20 per dolly

GIGS Sight Kill



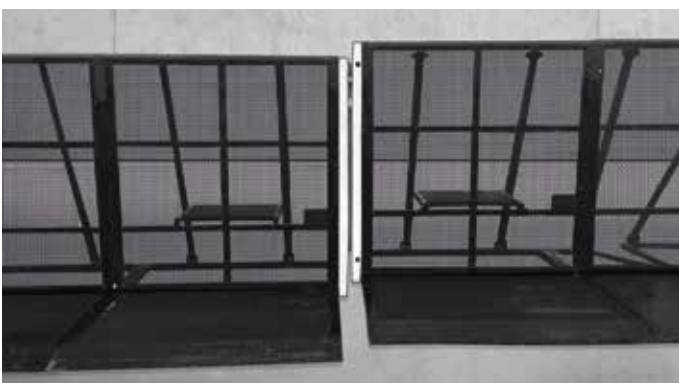
Material: aluminum
Dimensions (l x w x h): 0.09 x 1.09 x 0.915 m (3 x 43 x 36 in)
 total: 0.09 x 1.09 x 2.10 m (3 x 43 x 82 in)
Weight: approx. 16.40 kg (36 lbs)
Color: silver or black
Transport: 10 per dolly

GIGS High Fence



Material: aluminum
Dimensions (l x w x h): 0.09 x 1.09 x 0.915 m (3.5 x 43 x 36 in)
 total: 0.09 x 1.09 x 2.10 m (3.5 x 43 x 83 in)
Weight: approx. 7.10 kg (15.6 lbs)
Color: silver or black
Transport: 40 per dolly

GIGS Level Piece



Material: steel
Dimensions (l x w x h): 0.05 x 0.20 x 1.18 m (2 x 8 x 46 in)
Weight: approx. 8.72 kg (19 lbs)
Color: silver or black

GIGS Bar Top



Material: aluminum
Dimensions (l x w x h): 0.40 x 1.09 x 0.15 m (43 x 16 x 6 in)
Weight: approx. 7.10 kg (15.6 lbs)
Color: silver or black
Transport: 40 per dolly

GIGS Back Step Straight



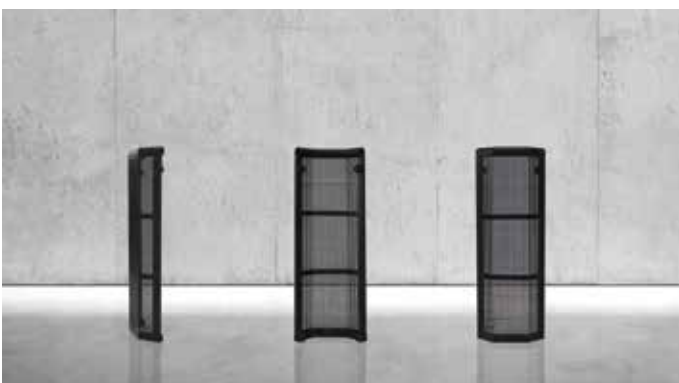
Material: aluminum
Dimensions (l x w x h): 1.07 x 1.09 x 0.50 m (42 x 43 x 20 in)
Weight: approx. 24.00 kg (52.9 lbs)
Color: silver or black
Transport: 12 per dolly

GIGS Back Step Curve



Material: aluminum
Dimensions (l x w x h): various
Weight: various
Color: silver or black

GIGS Compensator 90



Material: aluminum
Dimensions (l x w x h): 0.42 x 0.15 x 1.18 m (16 x 6 x 46 in)
Weight: approx. 8.00 kg (18 lbs)
Color: silver or black
Transport: 15 per dolly

GIGS Compensator 180



Material: aluminum
Dimensions (l x w x h): 0.60 x 0.30 x 1.18 m (23 x 12 x 46 in)
Weight: approx. 14.00 kg (31 lbs)
Color: silver or black
Transport: 10 per dolly

GIGS Multicore



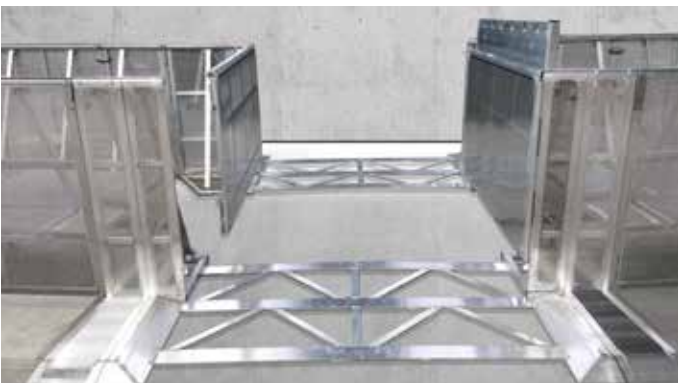
| | |
|--------------------------------|--|
| Material: | aluminum |
| Dimensions (l x w x h): | 1.09 x 1.25 x 1.18 m 43 x 49 x 46 in) opening cable outlet: 0.80 x 0.15 m (31 x 6 in) |
| Weight: | approx. 43.50 kg (96 lbs) |
| Color: | silver or black |
| Transport: | 10 per dolly |

GIGS Multicore Access Gate (MAG)



| | |
|--------------------------------|---|
| Material: | aluminum |
| Dimensions (l x w x h): | 1.09 x 1.25 x 1.18 m (43 x 49 x 46 in) opening cable outlet: 0.80 x 0.17 m (31 x 7 in) |
| Weight: | approx. 44.00 kg (97 lbs) |
| Color: | silver or black |
| Transport: | 10 per dolly |

MEGA Multicore Access Gate (MEGA MAG)



| | |
|--------------------------------|---|
| Material: | aluminum |
| Dimensions (l x w x h): | 2.18 x 1.25 x 1.18 m (86 x 49 x 46 in) opening cable outlet: 1.80 x 0.17 m (71 x 7 in) |
| Weight: | approx. 78.00 kg (172 lbs) |
| Color: | silver or black |
| Transport: | 5 per special dolly |

**WHEREVER
YOU GO, WE
ARE THERE...**